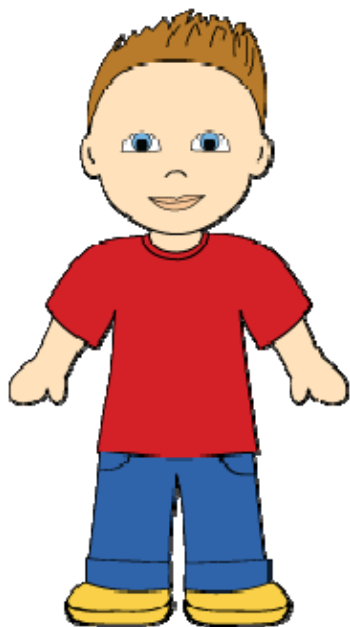
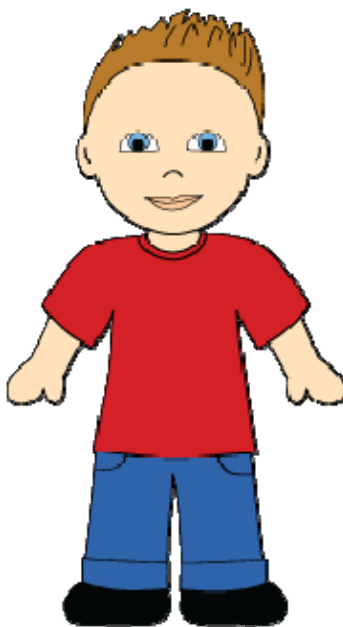
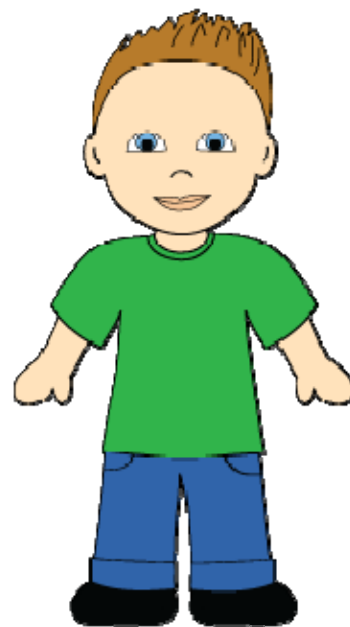


Who is who? Riddle

Look at the pictures and read the sentences. Who is who?







Peter is wearing blue jeans.

Tom is wearing a red T-shirt.

Mark is wearing black shoes.

Peter is not wearing a green T-shirt.

Peter is not wearing yellow shoes.

Tom is not wearing a green T-shirt.

Who is who? Riddle

Teacher's notes

- Put the students in groups.
- Hand out the worksheet with the riddle. The students have to decide who is who.
- Set a time limit (up to 10 minutes).
- The exercise is fairly difficult so monitor and help the groups (don't give away the answers though).

Key:

- | | |
|---|-------|
| 1 | Tom |
| 2 | Peter |
| 3 | Mark |